

Technical Data Sheet – GB38 230V Commercial Blender

PROPRIETARY RIGHTS NOTICE This document and all information contained within it is the property of Hamilton Beach Brands, Inc. (HBB). It is confidential and proprietary and has been provided to you for a limited purpose. It must be returned or destroyed upon request. Disclosure, reproduction or use of this document and any information contained within it, in full or in part, for any purpose is forbidden without the prior written consent of HBB. No photographs may be taken of any article fabricated or assembled from this document without the prior written consent of HBB.

Trouble Shooting Guide

Symptom: No response when the start switch is activated and the LED flashes 3-4 times after each attempt.

Cause: Jar is not installed on the base. Lid is not fully seated on the jar. Lid is not in the correct orientation on the jar. Interlock components in the jar are faulty.

Container Bypass Feature (used as a check) – With main power switch in off position, engage both paddle switches in the momentary position (start and pulse). While holding the paddle switches, turn on the main power switch. This will allow the blender to function on high speed. Once either of both paddle switches are released, the motor will turn off. This feature is to troubleshoot the interlock jar, but will not rule out interlock components in the base.

Symptom: During a normal cycle the machine stopped and the LED is FLASHING.

Cause: Lid not seated fully on the jar. There was an imbalance in the jar causing the connection between the jar and base to be interrupted. The unit possibly overheated. Check the electrical circuit to verify that power is getting to the machine. If so, unplug the unit for 20-30 minutes. Plug in the unit and try to operate. If the problem persists proceed to the repair guide.

Symptom: No response when the start switch is activate and the LED is NOT FLASHING.

Cause: Ensure the power outlet is operational. Ensure that the circuit breaker on the back of the machine is in the ON position. Possible defective switch. Possible faulty PCBA.

Symptom: On/Off/Pulse switch or Low/High switch is binding.


Cause: Ensure switch is free of debris. Gently clean around edges.

Symptom: Unit is extremely noisy.

Cause: Possible worn bearing on cutter assembly. Remove container from blender. Slowly turn the cutter assembly from the bottom of the container. If it is hard to turn or feels loose / wobbly replace cutter assembly. Possible worn drive coupling. Check the teeth of the drive coupling. If worn, replace drive coupling outlined in repair guide.

Symptom: Blends poorly

Cause: Incorrect mixture of ingredients. If cavitating, add more liquids. Possible worn bearing on cutter assembly. Possible worn drive coupling. Replace cutter assembly.

 4421 Waterfront Drive Glen Allen, VA 23060	Revision	Production Release.					Rev. Date:	
	Description:						22-Jul-2020	
	Request #:	DOC11178	Page:	1 of 6	Document #:	520009800	Rev:	A

Technical Data Sheet – GB38 230V Commercial Blender

PROPRIETARY RIGHTS NOTICE This document and all information contained within it is the property of Hamilton Beach Brands, Inc. (HBB). It is confidential and proprietary and has been provided to you for a limited purpose. It must be returned or destroyed upon request. Disclosure, reproduction or use of this document and any information contained within it, in full or in part, for any purpose is forbidden without the prior written consent of HBB. No photographs may be taken of any article fabricated or assembled from this document without the prior written consent of HBB.

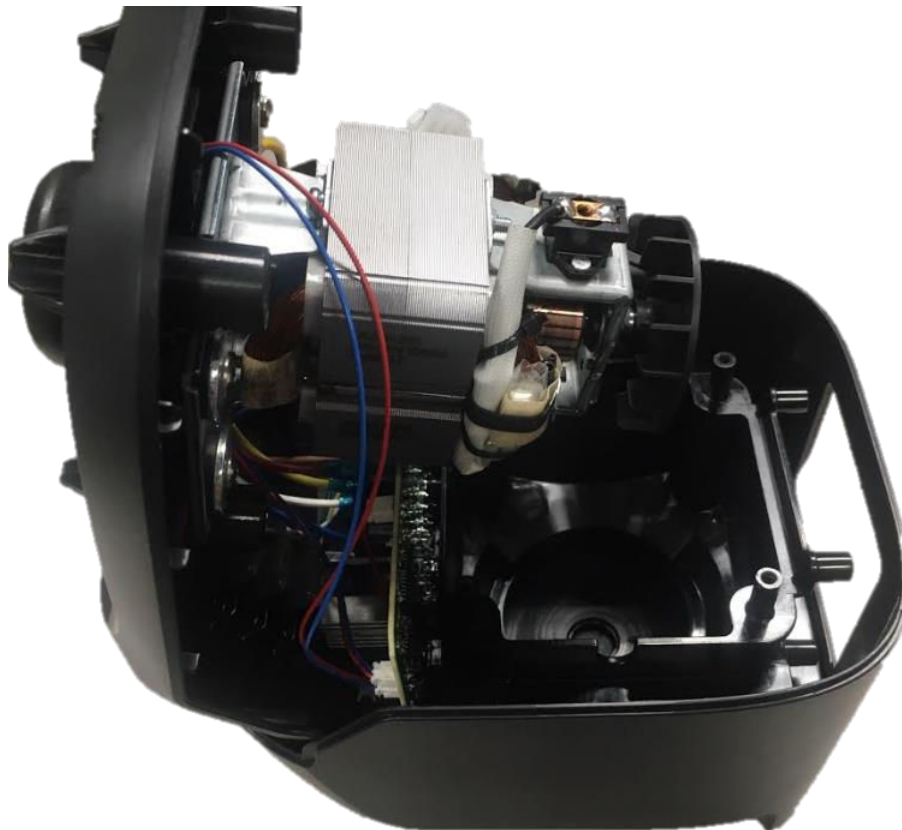
Repair Guide


Drive Clutch Removal/Replacement

- Turn power switch to the “OFF” position and unplug the machine.
- Remove the motor access cover on the bottom side of the unit.
- Use 10mm socket or nut driver to hold the motor shaft while you rotate the drive clutch counter-clockwise.

Housing Disassembly

- Turn power switch to the “OFF” position and unplug the machine.
- Remove the jar pad.
- Remove the four screws under jar pad feet.
- Carefully Split the upper and lower housings; wires will limit your movement.



 4421 Waterfront Drive Glen Allen, VA 23060	Revision	Production Release.				Rev. Date:	
	Description:					22-Jul-2020	
	Request #:	DOC11178	Page:	2 of 6	Document #:	520009800	Rev: A

Technical Data Sheet – GB38 230V Commercial Blender

PROPRIETARY RIGHTS NOTICE This document and all information contained within it is the property of Hamilton Beach Brands, Inc. (HBB). It is confidential and proprietary and has been provided to you for a limited purpose. It must be returned or destroyed upon request. Disclosure, reproduction or use of this document and any information contained within it, in full or in part, for any purpose is forbidden without the prior written consent of HBB. No photographs may be taken of any article fabricated or assembled from this document without the prior written consent of HBB.


Motor Removal/Replacement

- Remove the drive clutch as described above.
- Disassemble housings as described in **Housing Disassembly** above.
- Remove the ground screw securing the green and yellow ground wire to the motor bracket.
- Disconnect motor leads at the High/Low paddle switch and the On/Off/Pulse paddle switch by removing wire nut.
- Remove the four screws that secure the motor to the upper housing.
- Lift the motor from the upper housing.
- Reassemble in reverse order using wire nuts to reattach leads.



Circuit Board Removal

- Disassemble housings as described in Housing Disassembly above.
- Remove the 4 feet from the bottom of the unit.
- Remove the 4 screws under the feet.
- Disconnect the power cord 3-pin connector.
- Remove lower housing from the assembly.
- Remove the 4 screws that secure the circuit board to the motor shroud.
- Disconnect wires from circuit board. Mark wire location if necessary.
- Reassemble in reverse order.

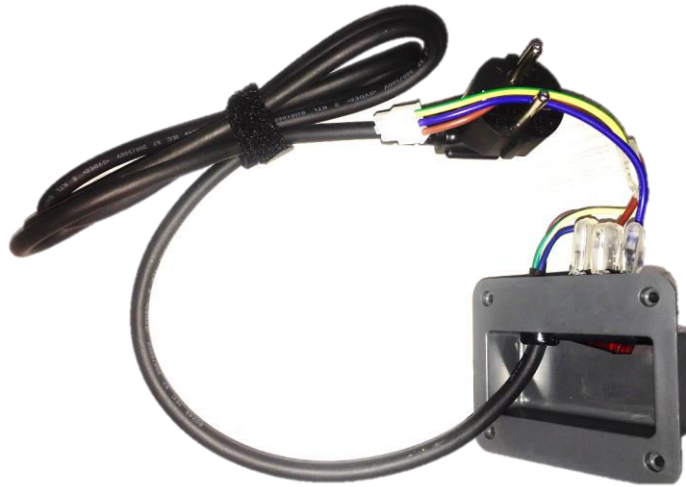
 4421 Waterfront Drive Glen Allen, VA 23060	Revision	Production Release.					Rev. Date:	
	Description:						22-Jul-2020	
	Request #:	DOC11178	Page:	3 of 6	Document #:	520009800	Rev:	A

Technical Data Sheet – GB38 230V Commercial Blender

PROPRIETARY RIGHTS NOTICE This document and all information contained within it is the property of Hamilton Beach Brands, Inc. (HBB). It is confidential and proprietary and has been provided to you for a limited purpose. It must be returned or destroyed upon request. Disclosure, reproduction or use of this document and any information contained within it, in full or in part, for any purpose is forbidden without the prior written consent of HBB. No photographs may be taken of any article fabricated or assembled from this document without the prior written consent of HBB.


Switch w/ Cordset Assembly Removal/Replacement

- Remove 4 screws on the rear panel.
- Disconnect the power cord 3 pin connector.
- Reassemble in reverse order



Switches

- Disassemble housings as described in **Housing Disassembly** above.
- Disconnect the wires at the switch.
- Depress the 4 locking tabs that secure the switch to the upper housing and remove.
- Reassemble in reverse order.

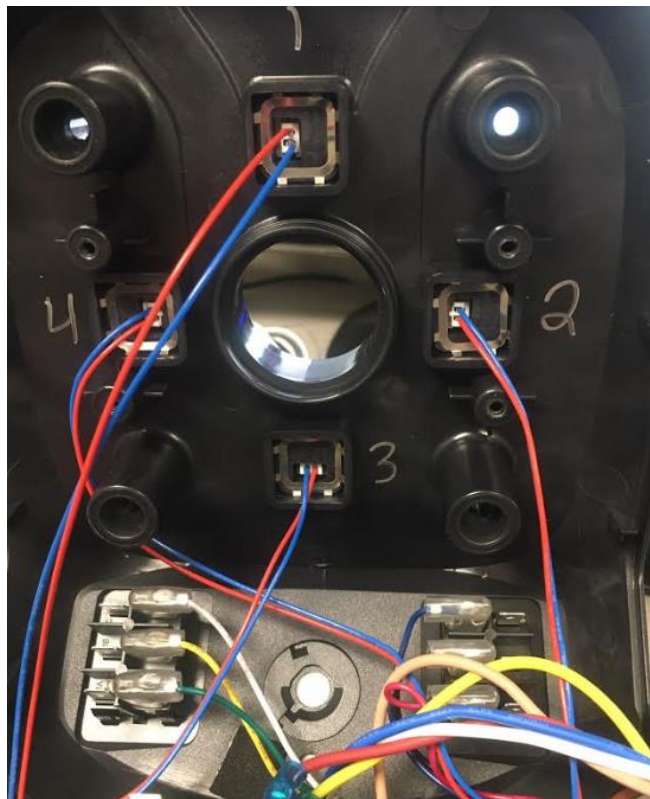
 4421 Waterfront Drive Glen Allen, VA 23060	Revision	Production Release.					Rev. Date:	
	Description:						22-Jul-2020	
	Request #:	DOC11178	Page:	4 of 6	Document #:	520009800	Rev:	A

Technical Data Sheet – GB38 230V Commercial Blender

PROPRIETARY RIGHTS NOTICE This document and all information contained within it is the property of Hamilton Beach Brands, Inc. (HBB). It is confidential and proprietary and has been provided to you for a limited purpose. It must be returned or destroyed upon request. Disclosure, reproduction or use of this document and any information contained within it, in full or in part, for any purpose is forbidden without the prior written consent of HBB. No photographs may be taken of any article fabricated or assembled from this document without the prior written consent of HBB.

Circuit Board Wiring Details

- The white motor lead to terminal W1
- The red motor lead to terminal W2
- The yellow motor lead to terminal W3
- The brown motor lead to terminal W4
- The blue motor lead to terminal W5
- The green and yellow to terminal Earth
- The brown power lead to terminal ACL
- The blue power lead to terminal CAN
- LED to terminal J14
- Jar interlock sensors installed in upper housing (image below)



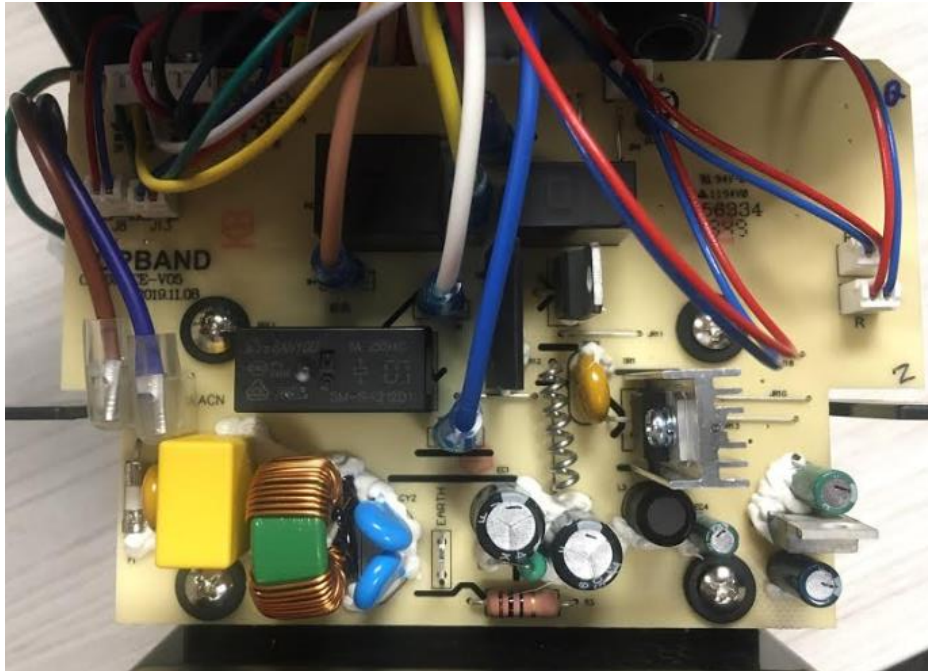
Base Sensors for Lid Interlock (through the Container) – see list below for location/orientation in base and the connection points on the PCB

- Lead 1 to J12
- Lead 2 to J8
- Lead 3 to J11
- Lead 4 to J13

Hamilton Beach 4421 Waterfront Drive Glen Allen, VA 23060	Revision	Production Release.				Rev. Date:	
	Description:					22-Jul-2020	
	Request #:	DOC11178	Page:	5 of 6	Document #:	520009800	Rev: A

Technical Data Sheet – GB38 230V Commercial Blender


PROPRIETARY RIGHTS NOTICE This document and all information contained within it is the property of Hamilton Beach Brands, Inc. (HBB). It is confidential and proprietary and has been provided to you for a limited purpose. It must be returned or destroyed upon request. Disclosure, reproduction or use of this document and any information contained within it, in full or in part, for any purpose is forbidden without the prior written consent of HBB. No photographs may be taken of any article fabricated or assembled from this document without the prior written consent of HBB.



Power Cord Wiring Details

- Green cord lead connects to the motor ground.
- Blue cord lead connects to the lamp side of the circuit breaker switch.
- Brown cord lead connects to the open/closed side of the circuit breaker switch.



 4421 Waterfront Drive Glen Allen, VA 23060	Revision	Production Release.				Rev. Date:	
	Description:					22-Jul-2020	
	Request #:	DOC11178	Page:	6 of 6	Document #:	520009800	Rev: A