



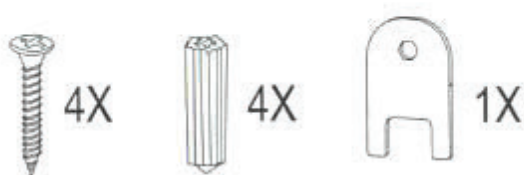
PRODUCT SPECIFICATION



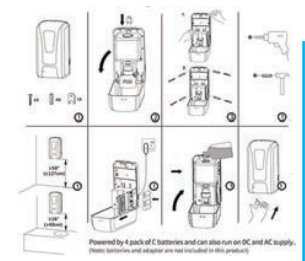
Technical Specifications

Product Name	Touch Free Refillable Dispenser (Gel)	Liquid Mode	Gel
Product Code	SDTFRDS	Installation Method	Wall Mounted / Floor Stand
Product Size	121X1135X110 mm	Product Material	ABS
Capacity	1000 ml	Power supply mode	4* C batteries (not included) DC adapter (not included)
Applicable Scenarios	Kindergarten / Food processing / hospital / Office / Restauranty / Hotel		

WHAT IS IN THE BOX



Key

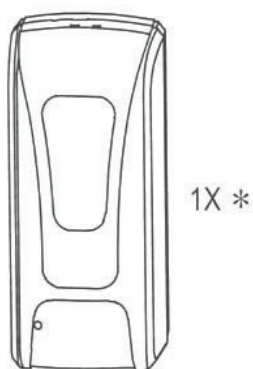


Installation diagram

Powered by 4 pack of C batteries and can also run on DC and AC supply.
(Note: batteries and adapter are not included in this product)

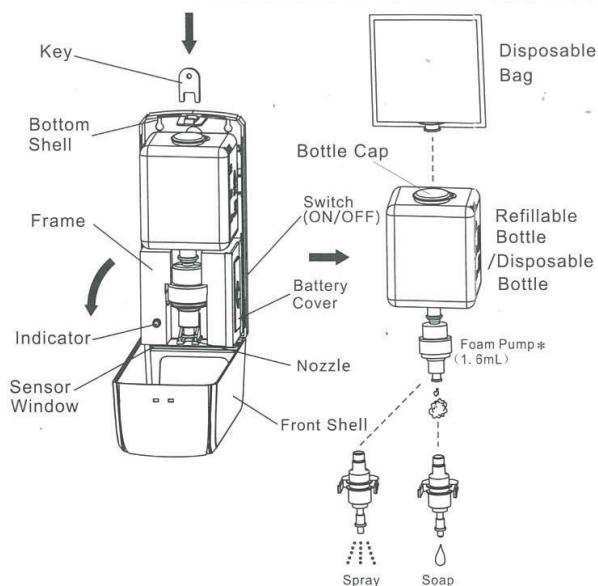
PRODUCT INSTALLATION (Floor / Table)

A Packing list



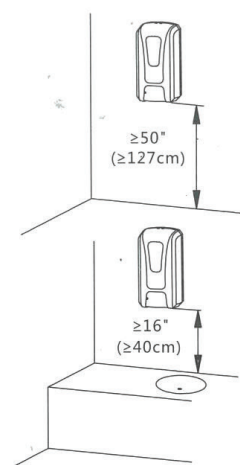
- ⓘ Gel and spray dispensers have different shape but same installation.

B Part name



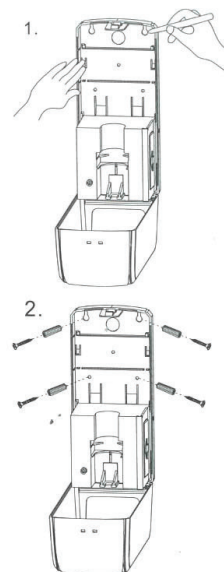
- ⓘ Different pump for different liquid
 1. Spray: Sanitiser liquid.
 2. Soap Gel or soap liquid:

C Height from floor/table



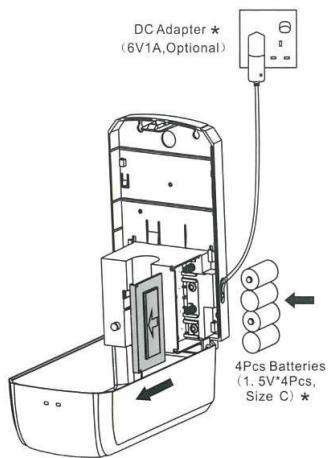
- ⓘ Keep away from sunshine and humid place.

D Way for screw



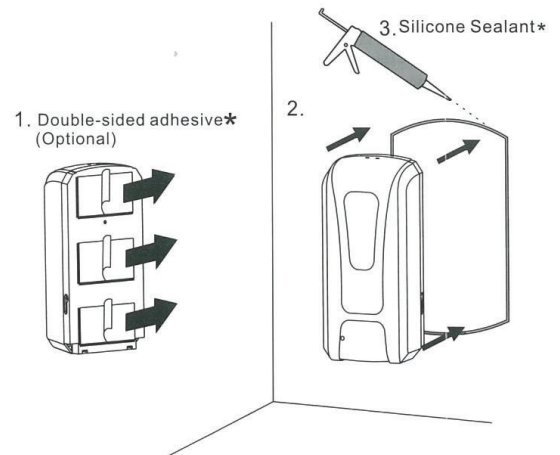
PRODUCT INSTALLATION (Adhesive Backing)

E Install Batteries - DC adapter



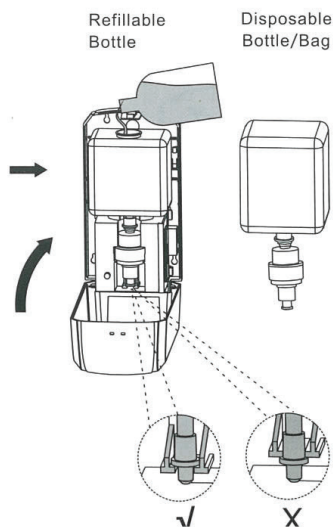
- ⚡ 4* C batteries (not included)
- ⚡ DC adapter (not included)

F Installation with adhesive backing (no screws)



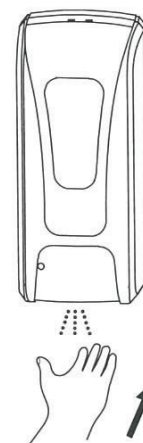
- ⚡ The standard packaging is not including double-sided adhesive and silicone sealant.

G Fill liquid



- ⚡ 4* C batteries (not included)

H Enjoy hand sanitising



- UV disinfection
- LED Light:
 1. green color 5 seconds flush: working condition
 2. red color 5 seconds flush: low power for battery and change;
 3. red color 2 seconds flush: something under sensor and remove it;

- ⚡ Sensing distance: 8-12 cm