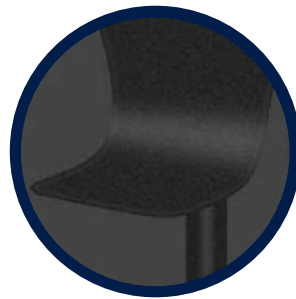





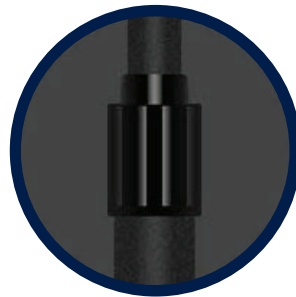
# FLOOR STAND DISPENSER



## ALUMINUM BRACKET



 Durable integrated backplane



 Flexible height adjustable

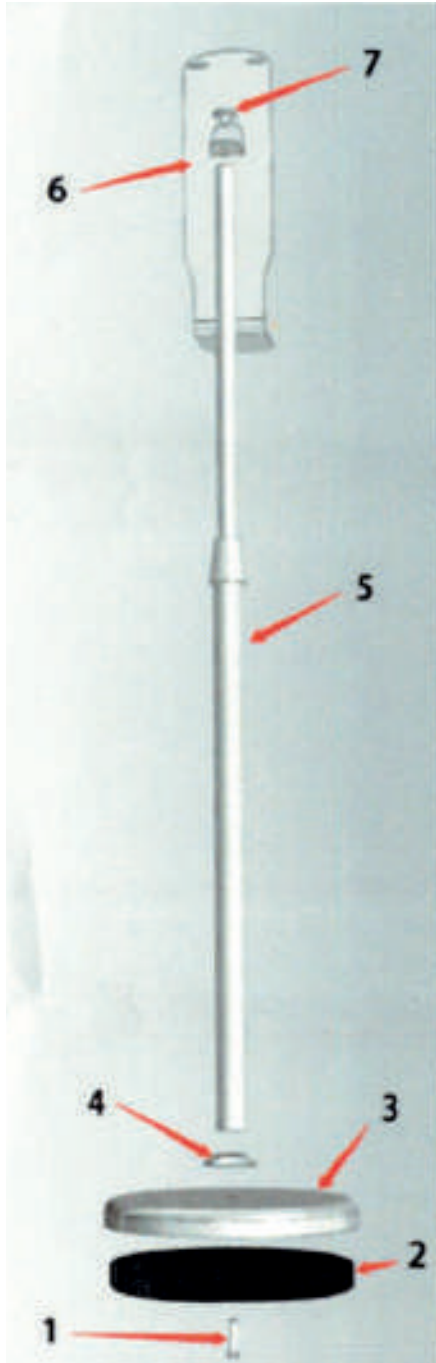


 Stable base not wobble



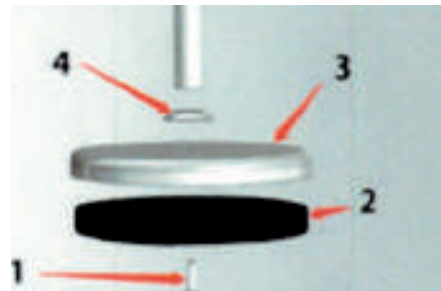
# FLOOR STAND DISPENSER ASSEMBLY INSTRUCTIONS

1



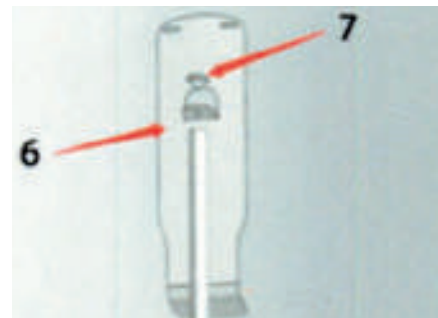
⚡ Open the box and tear off the protective films from 3 and 6 parts as the figure

2



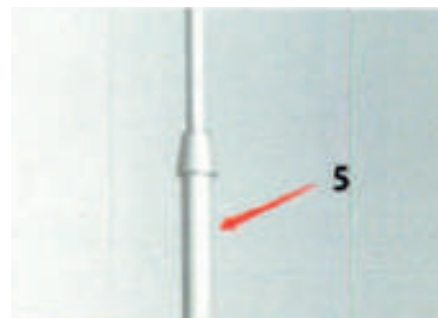
Unscrew the screw 1 from the bottom of the base, assemble 1,2,3,4 and 5 in sequence according to the figure, fix them.

3



Unscrew 7 from the backplate, then use it to connect 6 and 5 as shown in the figure. Tighten the screw.

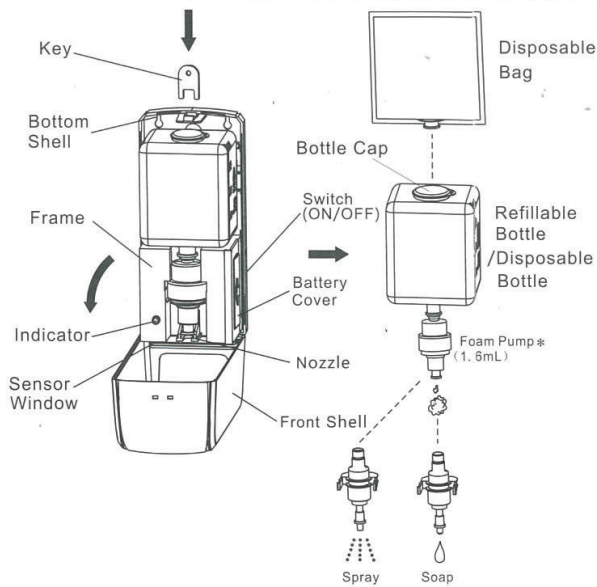
4



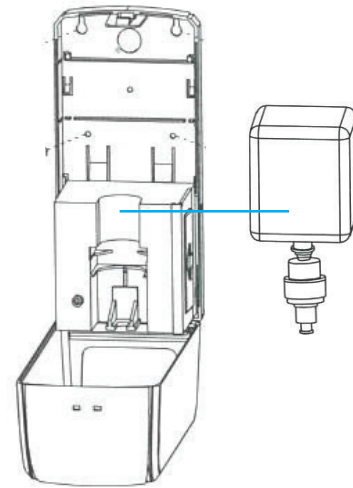
Turn 5 knobs to adjust the height

# PRODUCT INSTALLATION (Floor stand dispenser)

Part name



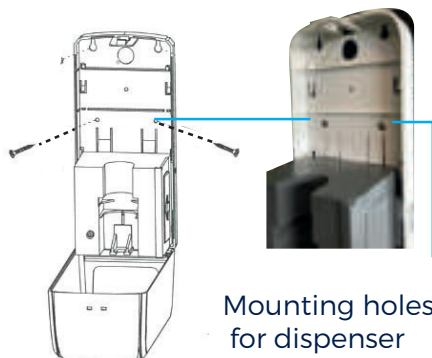
1



- 1. Different pump for different liquid
- 1. Spray: Sanitiser liquid.
- 2. Soap Gel or soap liquid:

- 1. Open dispenser and Remove refillable bottle.

2



3



- 2. From inside the dispenser, insert screws through slots and into floor stand. Use the acorn nuts provided, to secure the dispenser to the floor stand.

- 3. Place provided foam cubes into floor stand to provide more stability.

Insert the removed refillable bottle into the dispenser.